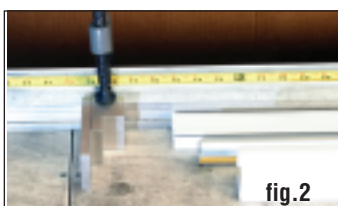
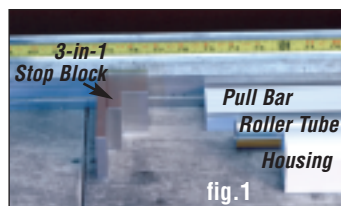


Cut & Build

The following material must be cut to length:
Housing, Pull Bar, and Roller-Tube.

Using the shortest dimension taken from the door frame, set the "3 in 1" **Stop Block** on your "cutting fence" to measurement and clamp into place (figures 1 & 2).

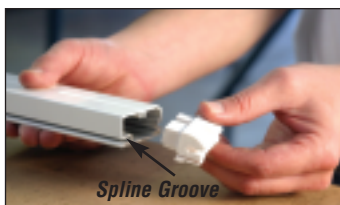
Align and cut all 3 parts to size (figures 3 & 4).



Pull Bar Assembly

Install bottom **End Cap** on **Pull Bar** using # 6 x 3/4" screw.

IMPORTANT: Screen Spline Groove must be facing down as illustrated below.



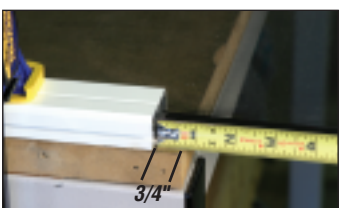
Trim excess spline flush with fabric and insert into **Pull Bar**.



Ensure spline is properly seated.



Position top end of **Pull Bar** assembly 3/4" back from edge of table; clamp **Pull Bar** flush with side of table as shown below.



1.

Cutting Screen Fabric

1. Secure loose end of screen fabric to table top using clamps (Figure 3).
2. Trim spline flush to edge of table (figure 1).
3. Cut screen material using the table top as a straight edge (figure 2).

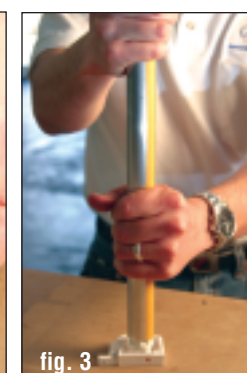
NOTE: Screen must be cut straight.



RollerTube Preparation

1. Locate the "marked" end of the Roller Tube and fully insert **Speed Reducer** (figure 1).
2. Insert **Spring** Assembly into other end of **Roller Tube** (figure 2).

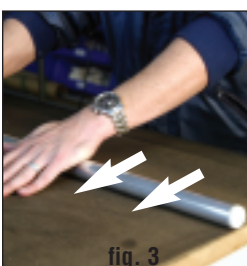
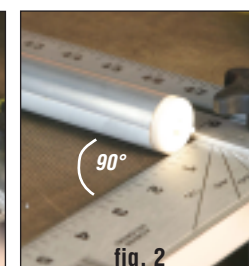
Helpful Hint: Use a **Housing End Cap** to help install the **Spring** assembly (figure 3).



Attach Fabric To Roller Tube

1. Add 6" to the door opening width (i.e. 30" opening requires 36" of fabric).
2. Measure from inside **Pull Bar** across screen fabric (figure 1).
3. Place "T" or carpenter square at measured length (figure 1).
4. Remove adhesive backing on **Roller Tube**.
5. Align length of **Roller Tube** with "T" square (ensure tape is close to, but not on, fabric). The **Speed Reducer** MUST be perpendicular (90 degrees) with edge of fabric (figure 2).
6. Carefully roll tube onto screen fabric (figure 3), remove clamps.

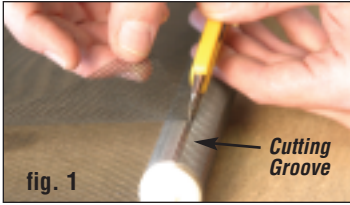
NOTE: For proper adhesion, press fabric to **Roller Tube**.



2.

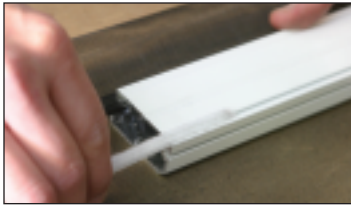
Trimming The Fabric

1. Carefully trim excess fabric using a utility knife along cutting groove found on **Roller Tube** (figure 1).
2. Carefully roll screen material onto **Roller Tube**, towards **Pull Bar** (figure 2).



Final Pull Bar Assembly

Fully insert pile into **Pull Bar** and cut 1/16" longer than **Pull Bar**.

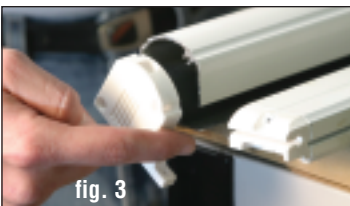
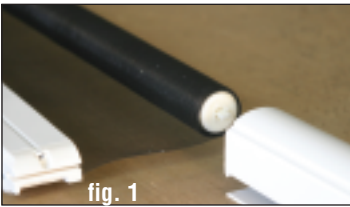


Install remaining **Pull Bar Cap**.



Housing Assembly

1. Slide **Housing** over **Roller Tube** assembly (figure 1).
2. Insert spring-end **Housing Cap** and **wind spring clockwise** according to table "A". (figures 2 & 3).
3. Fasten **Housing Cap** to **Housing** body (figure 4).
4. Install **Pile** or **Bug Seal** as needed on **Housing** (figures 5 & 6)
5. Install remaining **Housing Cap** (figures 7 & 8).



3.

TABLE "A"

Door Height	Number of Winds
Up to 84"	12
UP to 98"	14

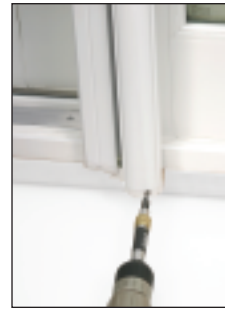
Door System Installation

The door system should be mounted on the door frame where the **Pull Bar** of the door system will be free to close across the opening.

1. Locate ideal mounting position and fit into place (figure 1).
2. Using a 7/64" drill bit, mark for pilot hole location (figure 2).
3. Remove unit and drill pilot hole (figure 3).
4. Re-locate door system and install # 6 x 2-1/2" screw loosely.



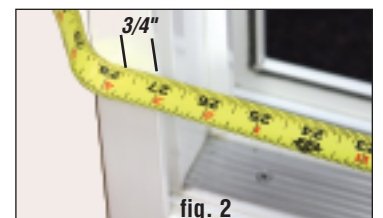
5. Position bottom of door system and mark for pilot hole.
6. Repeat steps 2-3 from above.
7. Re-locate door system and tighten all screws (top & bottom).



Measuring • Cutting • Installing Rails

Measuring

Measure from the inside of **Housing** to 3/4" beyond the inside edge of the door frame (figures 1 & 2).



Cutting The Rails

Remove 48" rails from protective bags, and cut to measured size.

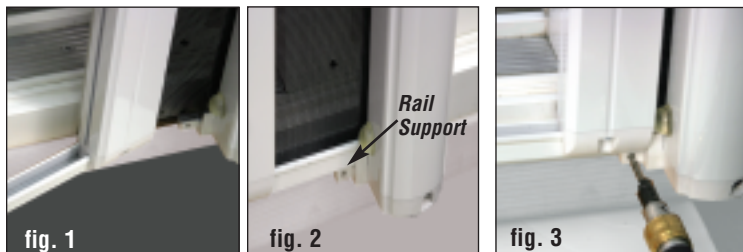


4.

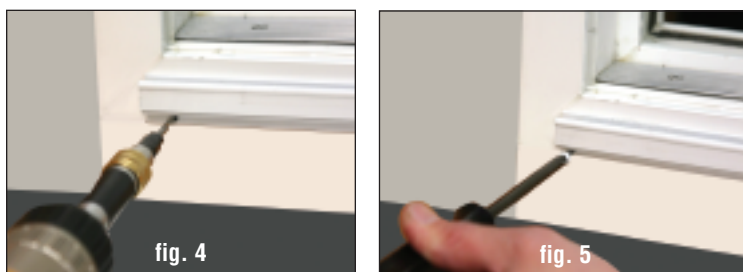
Installing The Rails

Bottom Rail

1. Insert **Rail** into **Pull Bar Guide** (figure 1).
2. Carefully Slide **Rail** into **Housing Cap** rail support (figure 2).
3. Drill a 7/64" pilot hole through **Rail** and into doorframe, using the



- rail mounting hole in **Housing Cap** as a guide (figure 3).
4. Install # 6 x 3/4" self-tapping screw and fasten **Rail** into place.
 5. Ensure **Rail** is even to bottom edge of door frame then drill a 7/64" pilot hole through **Rail** and into door frame (figure 4).



6. Install # 6 x 3/4" self-tapping screw (figure 5).
7. Repeat steps 5-6 for center of **Rail**.

Top Rail

1. On the door jamb side of the top rail, drill a 3/16" hole, 1/4" from end of **Rail** (figure 1).
2. Repeat Steps 1-4 from above.
3. Extend **Pull Bar** to jamb to align top rail (figure 2).
4. Mark position of **Rail** and drill 7/64" pilot hole into door frame



(figure 3).

5. Install self-tapping screw and adjust **Rail** if necessary.
6. Check door system for smooth operation.
7. Install **Housing Cap** screw hole plugs (2) at top and bottom.

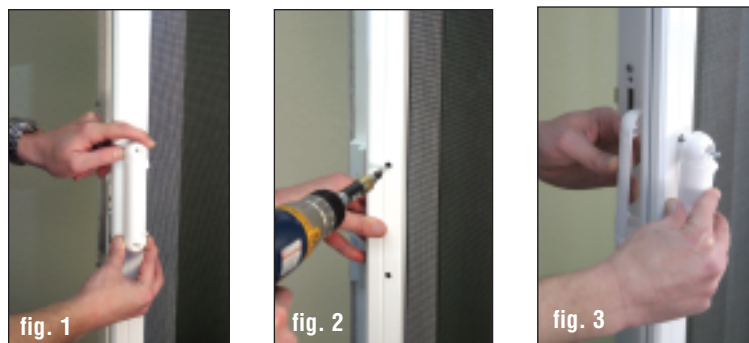
Handle & Magnetic Latch



Handle Placement

Handles can be placed anywhere along the height of the **Pull Bar**. Locate handle so it will not interfere with the existing door's handle or hardware.

1. Using handle as template, mark holes on **Pull Bar** (figure 1).
2. Drill 1/8" hole **straight through Pull Bar** (figure 2)
3. Install **Handles** using provided # 6 x 1-3/4" screws (figure 3).
4. Install Handle Screw Hole Plugs (2).



Magnet Installation

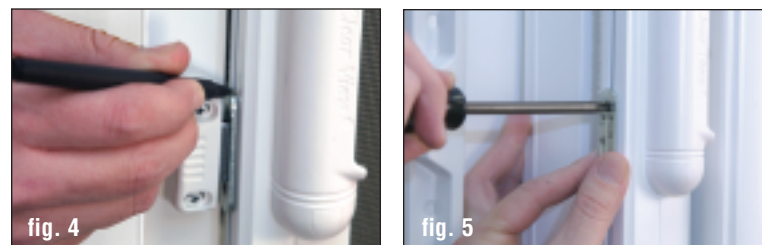
Positioning of the **Magnet** Assembly can vary depending on the application. The **Magnet** can be placed either on the **Pull Bar** or the door frame. For this example, the **Magnet** was placed on the door frame.

1. Position **Magnet** on doorframe or **Pull Bar** (figure 1).
2. Using the **Magnet** assembly as a guide, drill 7/64" pilot holes (figure 2).
3. Install #6 x 3/4" screws loosely for adjustment (figure 3).
4. Place **Striker Plate** on **Magnet**, align and mark position of **Striker**



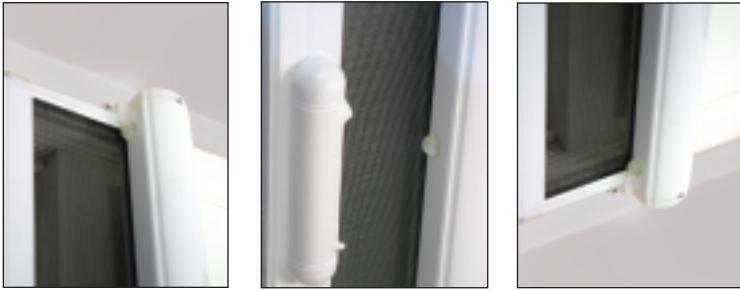
Plate on Pull Bar (figure 4).

5. Drill 1/16" holes into **Pull Bar**; fasten **Striker Plate** (figure 5).



Bumper Installation

A set of 3 self-adhesive **Bumpers** are included with the kit. Place one Bumper at the **Top**, one at the **Bottom**, and one in the **Center** to prevent the **Pull Bar** from coming in contact with the **Housing** when it retracts as illustrated below.

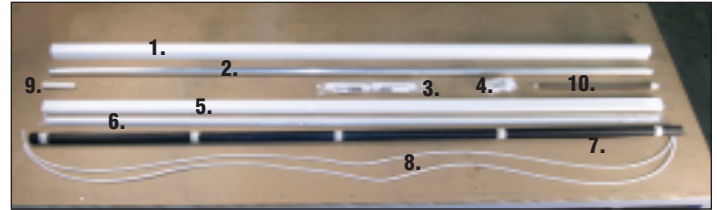


C.R. LAURENCE COMPANY, INC.

Retractable Screen Door Kit

• For openings up to 48" wide by 84" high

Measure • Cut • Build • Install
Instructions



Parts List

1. Housing
2. Roller Tube w/Tape
3. Handle Kit
4. End Cap Kit
5. Pull Bar
6. 80" Rail
7. Screen Material
8. Pile Gasket
9. Speed Reducer
10. Spring
11. 3-in-1 Stop Block (not shown)
12. Bug Seal (not shown)

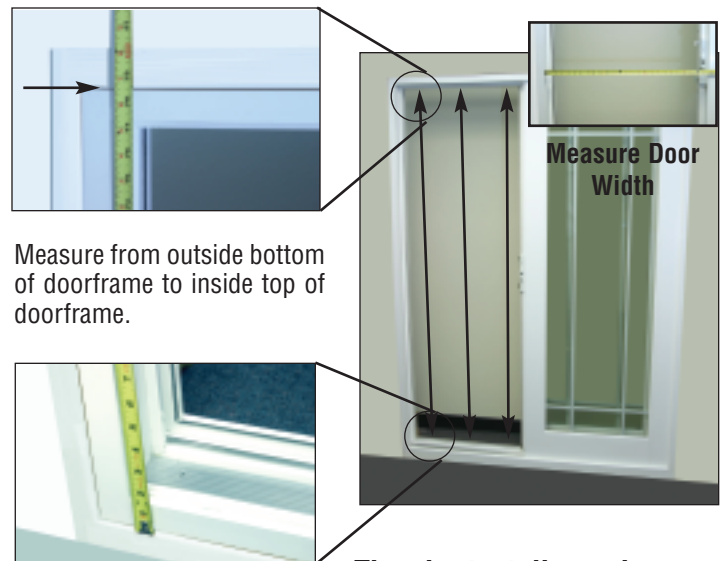
Required Tools

- #1 & 2 Phillips Screw Driver
- Measuring Tape
- Utility Knife
- Diagonal Cutters
- 4 "C" Clamps
- "T" or Carpenter Square
- Electric Drill
- 1/16" 7/64", 1/8", 3/16" Drill Bits
- Miter Saw or Hacksaw
- Safety Glasses
- Ear Protection
- 4' x 8' Flat Table

Universal Surface Mount

Measuring Door Opening

Measured height is taken across the opening in three locations as shown below:



Measure from outside bottom of doorframe to inside top of doorframe.

Measure Door Width

The shortest dimension will be used for the finished retractable door.



C.R. LAURENCE CO., INC.

2503 E. Vernon Avenue
Los Angeles, CA 90058-1897

(800) 421-6144
(800) 262-3299 Fax