

CRL OVERHEAD CONCEALED DOOR CLOSERS

For Pricing Visit Our Web Site or Call Us Toll Free at the Phone Numbers Shown on the Back Cover

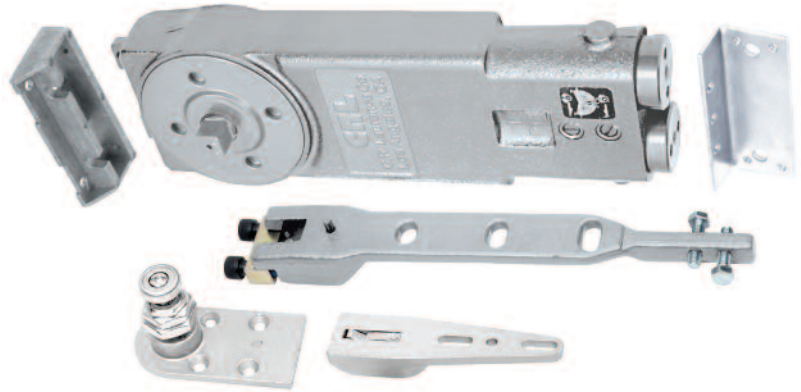
CRL Overhead Concealed Door Closers for End-Load Installations



A.D.A. Compliance Models Available



- Interchangeable With All Jackson Style Overhead Concealed Door Closers
- For Doors With 1" (25 mm) Top Rail Depth
- Includes All Necessary Parts
- 5 Year Limited Warranty
- UL Listed



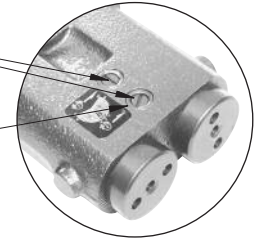
These Overhead Door Closer Kits consist of a Medium Spring Size Door Closer, Mounting Clips, Type "A" End-Load Arm, and a "DP" Adjustable Dual-Purpose Bottom Pivot Set. The Door Closer has independent, dual-action valves to control closing and latching speeds. Both 90 and 105 Degree Hold Open and No Hold Open models are available. Door Closer Bodies fit into standard 1-3/4" x 4" (44 x 102 mm), or larger, extrusions. For Door Closers with different spring sizes or hardware options, see Door Closer Bodies with Mounting Clips and Overhead Concealed Door Closer Accessories on pages 459H and 461H to 463H.

Independent Adjustment Valves

Non-Critical valve control adjusts both Closing Speed and Latching Speed independent of each other.

Special Retaining Rings

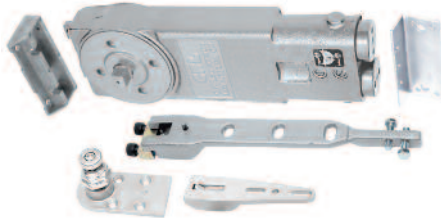
Prevent the Adjustment Valve Screws from being backed all the way out of the Door Closer Body.



NOTE: An auxiliary floor or overhead door stop is recommended to prevent possible damage to both the door closer and entryway due to over-extension of maximum allowable door swing.

"A" Package

- Adjustable Dual-Purpose Bottom Pivot Set for Floor or Threshold Mounting



CAT. NO.	SPRING SIZE	TYPE
CRL8160A	Medium	90° Hold Open
CRL8162A	Medium	90° No Hold Open
CRL8170A	Medium	105° Hold Open
CRL8172A	Medium	105° No Hold Open

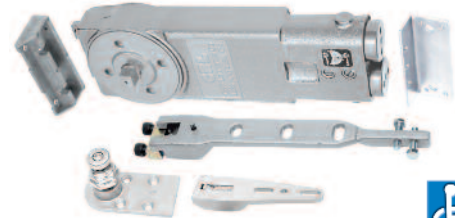
Minimum order: 1 each. All Door Closers can be combined for quantity pricing.



Although A.D.A. Series Door Closers comply with A.D.A. specified opening forces, they might not provide adequate spring power to control and close the door due to varying site conditions and door size.

A.D.A. "A" Package

- Adjustable Dual-Purpose Bottom Pivot Set for Floor or Threshold Mounting



CAT. NO.	SPRING SIZE	TYPE
CRL8960A	A.D.A. – 8.5 Lb.	90° Hold Open
CRL8962A	A.D.A. – 8.5 Lb.	90° No Hold Open
CRL8970A	A.D.A. – 8.5 Lb.	105° Hold Open
CRL8972A	A.D.A. – 8.5 Lb.	105° No Hold Open

Minimum order: 1 each. All Door Closers can be combined for quantity pricing.



CRL Door Pressure Gauge

- Helps to Determine if Amount of Force Required to Open Doors Meets A.D.A. Regulations
- Range is From 0 to 35 Pounds (0 to 15.9 kg)
- Pocket Sized Tool is Simple to Use



Our Door Pressure Gauge shows amount of force (pounds or kilograms) required to open doors so you can determine if door meets A.D.A. regulations. An absolutely vital tool if working on doors in facilities requiring full access to disabled persons. It can also be used to determine the amount of rolling force required to open or close patio doors. Minimum order is one each.

CAT. NO. HMC035