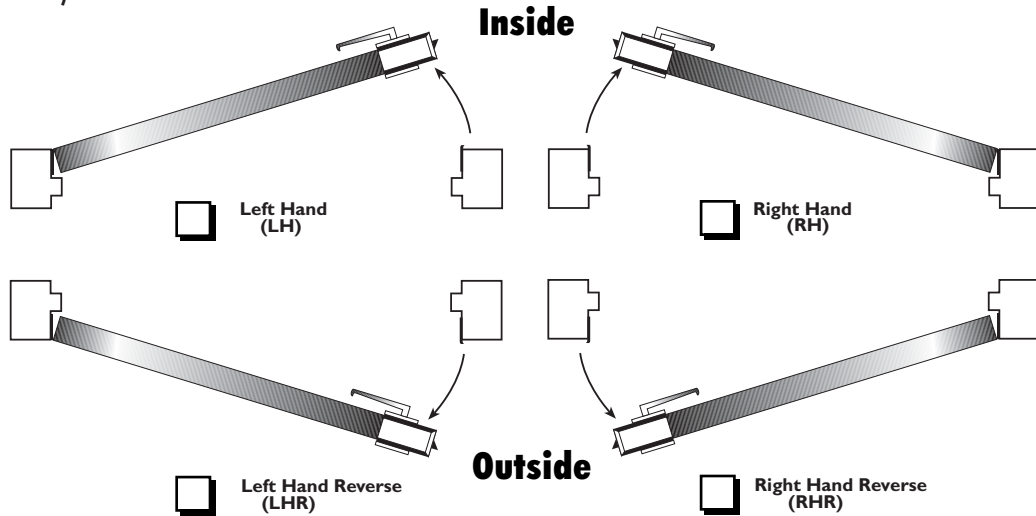


CRL Easy to Use Menu

4" x 10" CENTER LOCKS WITH DEADLATCH

DOOR HANDING

(Please Check One)



LOCK HOUSING FINISH

- US26D** Satin Chrome-Dull (SC)
- US3NL** Polished Brass-No Lacquer (PB)
- US32** Polished Stainless (PS)
- US32D** Brushed Stainless (BS)



GLASS (Not Provided)

- 3/8" (10mm) Tempered
- 1/2" (12mm) Tempered

LOCK TYPE



Deadlatch Lock

Includes matching faceplate for RH or LHR



Deadlatch Lock

Includes matching faceplate for LH or RHR

OUTSIDE OPERATION

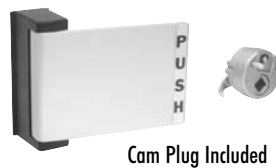
Keyed Cylinder



Lever Handle



Paddle Handle

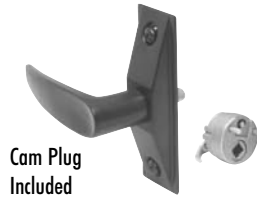


"Push to Right" Handle Shown

None
(Blank)

INSIDE OPERATION

Keyed Cylinder Thumbturn Lever Handle Paddle Handle None



(Blank)

OUTSIDE HANDLE OPTION



8" D-Handle

Note: Cannot be used if Lever or Paddle Handle are used on the same side

28" Cross Bar

Top Mount

Bottom Mount



None
(Blank)

INSIDE HANDLE OPTION



8" D-Handle

Note: Cannot be used if Lever or Paddle Handle are used on the same side

28" Cross Bar

Top Mount

Bottom Mount



None
(Blank)

STRIKE OPTIONS

In Stock

Strike Plates



Non-handed Stainless Steel Strike with Dustbox and Back-up Plate included. The DL4515 Strike is used for regular installations.

Universal Non-Handed Glass Mount Keeper



- Brushed Stainless(BS)
- Polished Brass-No Lacquer(PB)
- Polished Stainless(PS)
- Satin Chrome-Dull(SC)

Warning: Handles should only be used when Strike is mounted on operating doors.

Handle Option to Match Housing? Inside: Yes No
Outside: Yes No

Warning: When using the Glass Mount Keeper on a pair of doors, please make sure the door receiving the Keeper has a lock at the top or bottom of the door.

Custom Order



Glass Mount Keeper with Electric Strike

- Brushed Stainless(BS)
- Polished Brass-No Lacquer(PB)
- Polished Stainless(PS)
- Satin Chrome-Dull(SC)

Electric Strike Keepers are manufactured to match the handing you specify for the Lock Housing.

Warning: CRL does not recommend using Glass Mounted Keeper with Electric Strike on pairs of doors.

ATTENTION: TECHNICAL SALES

Quote Order

Company: _____

Contact Name: _____

Job Name: _____

Contact Phone: (_____) _____

Contact Fax: (_____) _____

Return Fax: (800) 587-7501